

# 2005 USA DRY BEAN CROP SUMMARY

The 2005 U.S. dry edible bean production returned to its 10-year average of 1.2 million tons thanks to improved weather conditions and increased acreage in all major production areas.

On the following page are the USDA's January 2006 final acreage and production numbers for the 2005 US dry bean crop. Total dry bean harvested acreage was up 28% and yield improved by 19%.

**Pinto bean** production increased 68% to a near-record 594,257 mt and represents 48% of the total US dry bean crop.

**Navy bean** production rebounded to 178,808 mt - an 84% increase over 2004 but still a modest navy bean harvest compared to production levels of the 1990's.

**Great northern bean** production also recovered in 2005 to 71,895 mt – a 67% increase over 2004 but significantly less than 96,000 mt harvests averaged over the last decade.

**Small red bean** production grew over 50% to 40,960 mt thanks to the introduction of the new Merlot variety which encouraged Michigan growers to double their small red bean acreage in 2005. With excellent color and cooking quality, the Merlot offers canners and packagers a very attractive option to other colored beans.

**Garbanzo** production grew to a near-record 48,580 mt, of which 4,008 mt were small caliber (6-7 mm) and 30,931 mt large caliber kabuli type.

**Black beans** were the only major class of US beans whose production declined in 2005. Large carryover stocks from the 2004 harvest convinced growers to reduce acreage. Michigan remains the leading black bean producer with 60% of the US production.

Best regards,



David McClellan, USDBC Representative – Barcelona

## **US-MEDITERRANEAN LEGUME TRADE CONFERENCE**

**USADPLC and USDBC are pleased to once again invite you to our conference and reception for legume trade professionals.**

**Tuesday, March 7, 2006**

**PALACIO DE CONGRESOS DE BARCELONA, PALACIO 5 , SALA 8**

**Fira de Barcelona - Recinto Montjuïc-1**

**17:00 to 18:00 – Conference**

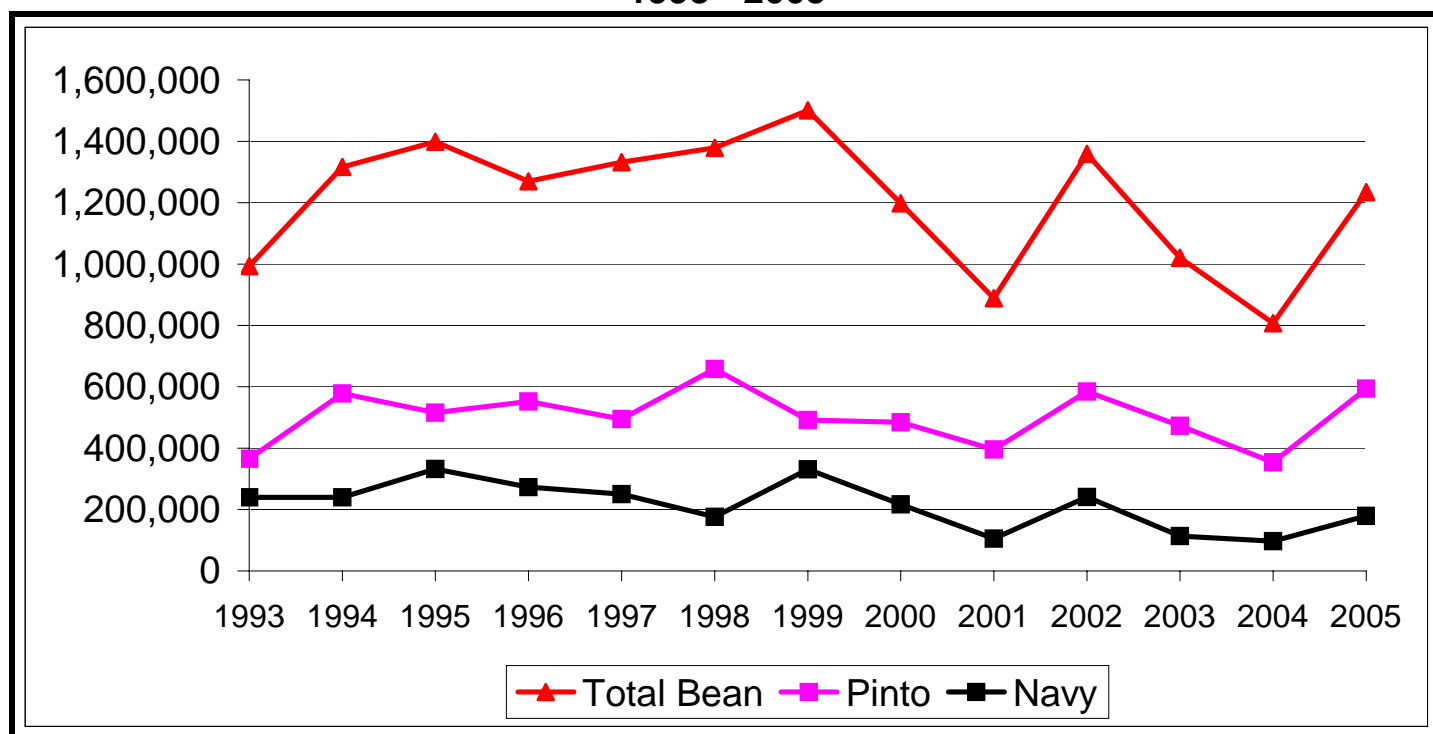
**18:00 to 19:30 – Reception**

# USA Dry Bean Crop Summary 2002 – 2005

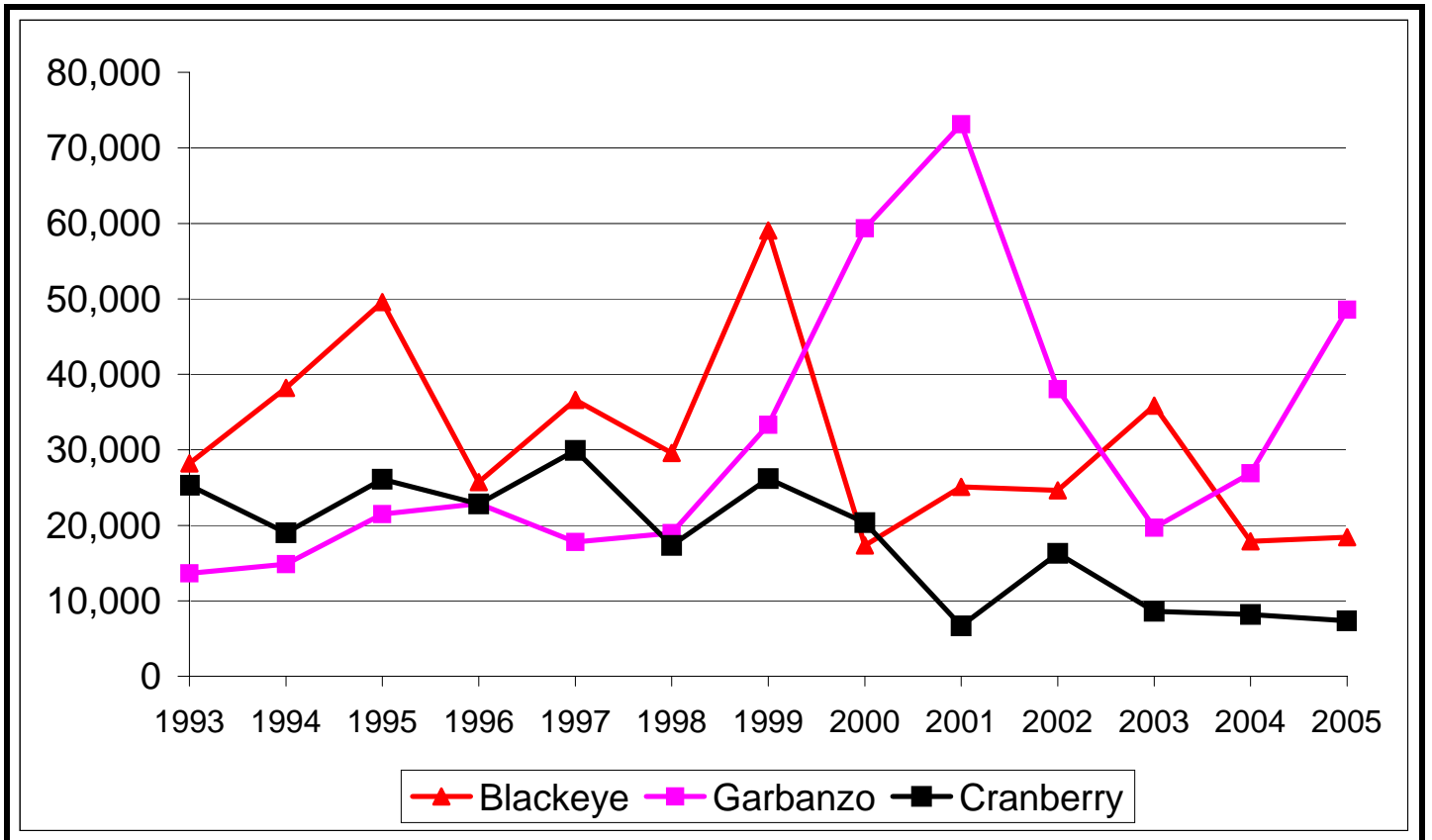
Based on USDA Final Crop Report of January 2006

	Area Harvested (ha)				Production (mt)			
	2002	2003	2004	2005	2002	2003	2004	2005
<b>Pinto</b>	293,525	258,785	232,267	306,518	584,233	474,145	354,441	594,257
<b>Navy</b>	123,715	61,093	65,789	89,352	240,588	114,034	97,160	178,808
<b>Great Northern</b>	33,225	42,024	18,947	28,826	70,081	100,517	43,137	71,895
<b>Black</b>	74,221	32,672	51,660	43,360	141,250	57,289	84,823	81,738
<b>Light Red Kidney</b>	27,034	25,951	21,255	27,854	54,386	49,669	36,741	50,395
<b>Dark Red Kidney</b>	25,900	19,595	18,866	21,174	48,762	38,329	30,935	41,686
<b>Blackeye</b>	13,112	18,664	10,243	8,704	24,630	35,607	17,872	18,416
<b>Others</b>	27,357	23,158	16,275	19,312	45,587	35,018	28,214	34,927
<b>Pink</b>	13,274	12,632	11,417	14,494	27,533	27,760	23,587	30,028
<b>Small red</b>	12,262	13,279	12,915	20,040	27,443	26,354	27,261	40,960
<b>Garbanzo, all</b>	28,693	16,761	17,571	34,939	38,011	18,915	26,898	48,580
<b>Large Lima</b>	7,365	7,692	5,911	6,073	15,150	16,738	13,472	15,967
<b>Baby Lima</b>	8,499	5,709	4,413	6,640	22,725	14,742	11,657	17,645
<b>Cranberry</b>	9,389	6,235	4,980	4,575	16,284	8,618	8,165	7,348
<b>Small White</b>	1,295	1,053	1,134	891	2,948	2,495	2,994	2,132
<b>Total USA</b>	<b>698,867</b>	<b>545,304</b>	<b>493,644</b>	<b>632,753</b>	<b>1,359,612</b>	<b>1,020,230</b>	<b>807,357</b>	<b>1,234,782</b>

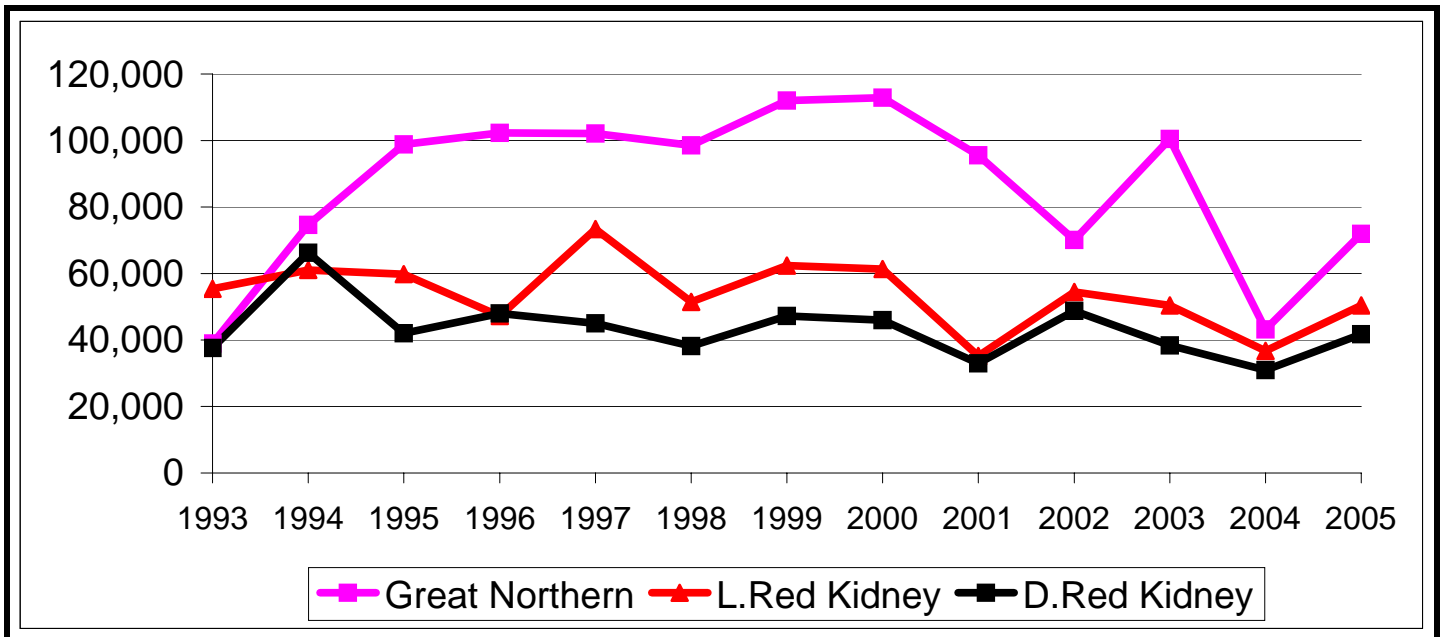
**Total US & Pinto & Navy Bean Production (MT)  
1993 - 2005**



**Cranberry, Blackeye, Garbanzo Production (MT)  
1993 - 2005**



**Light Red Kidney, Dark Red Kidney, Great Northern Production (MT)  
1993 - 2005**



**USA LEGUMBRES STAND – ALIMENTARIA 2006**

We invite you to visit our USA Legumes stand in the USA Pavilion in Palacio nº1 of the Alimentaria 2006 trade show.

**US-MEDITERRANEAN LEGUME TRADE CONFERENCE**

The USA DRY PEA & LENTIL COUNCIL (USADPLC) and the U.S. DRY BEAN COUNCIL (USDBC) are pleased to once again invite you to our conference and reception for legume trade professionals.

**Tuesday, March 7, 2006**

PALACIO DE CONGRESOS DE BARCELONA, PALACIO 5, SALA 8  
Fira de Barcelona - Recinto Montjuïc-1

**17:00 to 18:00 – Conference**

**18:00 to 19:30 – Reception**



Do you sell US legumes to the HRI trade? Is your company listed on the Local Suppliers List of [www.legumechef.com](http://www.legumechef.com)? If not, send us your contact information and logo to [legumechef@legumechef.com](mailto:legumechef@legumechef.com) or by fax to +34 93 589 7051.

Company \_\_\_\_\_

Person of contact \_\_\_\_\_

Address \_\_\_\_\_

Zip Code \_\_\_\_\_ City \_\_\_\_\_ Country \_\_\_\_\_

Tel \_\_\_\_\_ Fax \_\_\_\_\_

E-mail \_\_\_\_\_

Web \_\_\_\_\_

---

**US Dry Bean Council (USDBC)**

c/ Borrell 7 – Local 19 ● 08190 St. Cugat del Vallès (Barcelona) ● Spain

Tel: (34) 93 589 8547 ● Fax: (34) 93 589 7051 ● email: [dmcclellan@dmcclellan.com](mailto:dmcclellan@dmcclellan.com)